

## Installation Reference Guide

1289000A

# H-20 Load-rated Hatch/Access Covers

## Features

- 5/8" thick ASTM A36 smooth steel
- Steel curb frame w/anchor legs
- Hot dipped galvanized finish
- Threaded holes for eye bolts to assist in lifting



## Purpose

The purpose of this guide is to provide a brief reference to the recommended methods and procedures for installing Liberty Pumps H-20 hatch/access covers to ensure that damage or premature failure does not occur.

## Design

H-20 Hatch/Access Covers are designed for a load rating of 16,000 pounds with a 30% impact factor applied over a 10" x 20" area. They are intended for use in off-street locations with occasional traffic, such as sidewalks, medians, and road shoulders,

In addition to proper system engineering and competent manufacturing, the use of basin installers who have both practical experience and integrity to assist that the cover be installed properly, constitutes the greatest protection from catastrophic failure and liability exposure.

## General Handling

Standard practice precautions shall be taken whenever handling or moving access covers.

## Storage

Prior to installation, access covers shall be stored in a dry area on original shipping materials.

## Installation

The installation method shown in this guide only applies to fiberglass basins provided by Liberty Pumps.

Liberty Pumps recommends the following:

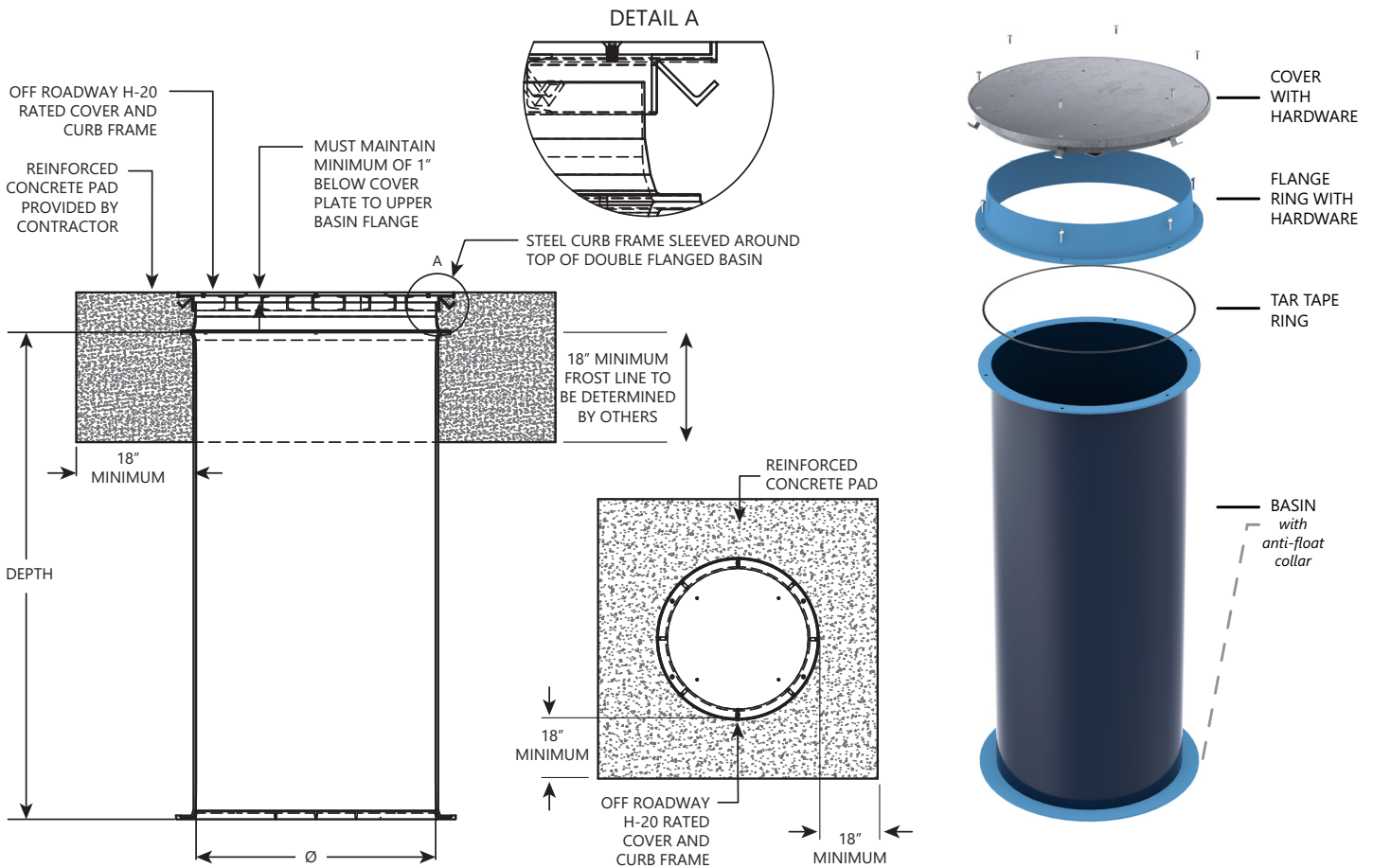
1. Formwork must be flush to the inside of support ledge frame. The entire frame and ledge must be supported with Class A concrete.
2. Secure unit to formwork using standard construction practices.
3. When pouring concrete, cover should be in the closed position.
4. Concrete to finish flush with top of unit framework.
5. Unit should be left in formwork for no less than 24 hours.
6. Clean all excess concrete from frame, over seat; and for a channel frame model, the drainage coupling.

## Maintenance

Since access covers manufactured by Liberty Pumps are of all aluminum and stainless steel construction, they require minimal maintenance. For optimum product life, perform the following procedures annually:

1. Apply graphite to the interior of all locking devices.
2. Apply a light coating of machine oil to all hinges and hardware.
3. Remove all debris from the cover seat and around hinges.
4. Check and tighten any loose hardware.
5. For channel frame models, remove loose debris from channel.

**Note:** When covers are ordered as part of a Liberty Pumps system, the flange ring is taped and installed prior to shipping. If covers are ordered separately, they will require a Liberty Pumps fiberglass flange ring and tar tape.



## Warranty

### Liberty Pumps Wholesale Products Limited Warranty

Liberty Pumps, Inc. warrants that Liberty Pumps wholesale products are free from all factory defects in material and workmanship for a period of three (3) years from the date of purchase (excluding batteries). The date of purchase shall be determined by a dated sales receipt noting the model and serial number of the pump. The dated sales receipt must accompany the returned pump if the date of return is more than three years from the date of manufacture noted on the pump nameplate.

The manufacturer's sole obligation under this Warranty shall be limited to the repair or replacement of any parts found by the manufacturer to be defective, provided the part or assembly is returned freight prepaid to the manufacturer or its authorized service center, and provided that none of the following warranty-voiding characteristics are evident:

The manufacturer shall not be liable under this Warranty if the product has not been properly installed, operated, or maintained per manufacturer instructions; if it has been disassembled, modified, abused, or tampered with; if the electrical cord has been cut, damaged, or spliced; if the pump discharge has been reduced in size; if the pump has been used in water temperatures above the advertised rating; if the pump has been used in water containing sand, lime, cement, gravel, or other abrasives; if the product has been used to pump chemicals, grease, or hydrocarbons; if a non-submersible motor has been subjected to moisture; or if the label bearing the model and serial number has been removed.

Liberty Pumps, Inc. shall not be liable for any loss, damage, or expenses resulting from installation or use of its products, or for indirect, incidental, and consequential damages, including costs of removal, reinstallation or transportation.

There is no other express warranty. All implied warranties, including those of merchantability and fitness for a particular purpose, are limited to three years from the date of purchase. This Warranty contains the exclusive remedy of the purchaser, and, where permitted, liability for consequential or incidental damages under any and all warranties are excluded.